



MONTHLY MEMBERSHIP PROGRESS REPORT

District 43 C

Results as of: 05/31/2018

GMT: STEVE ANTON

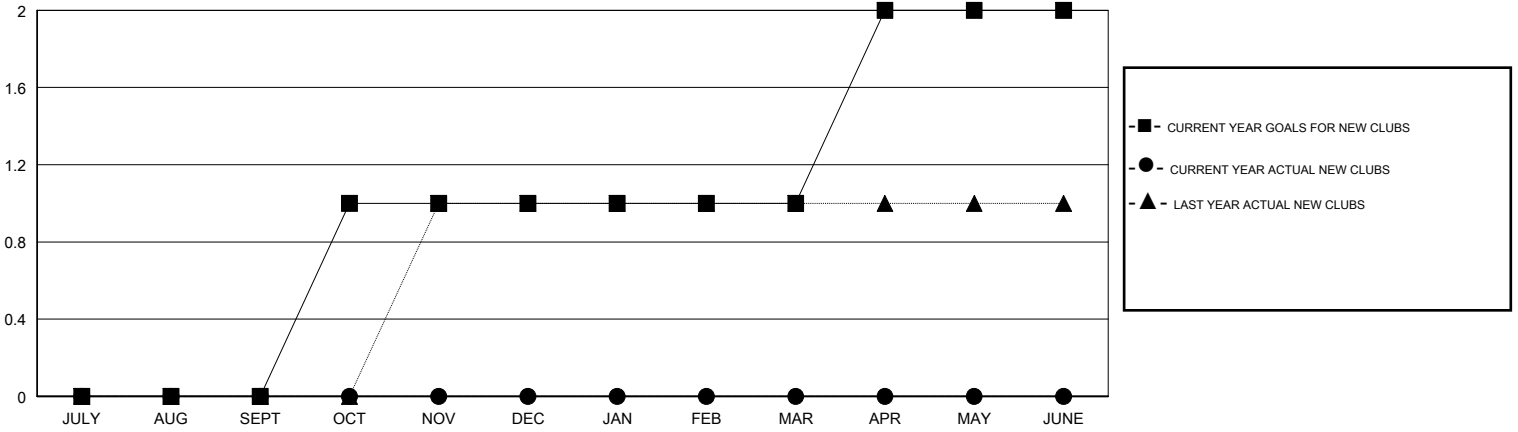
LOCATION KENTUCKY

GMT CA

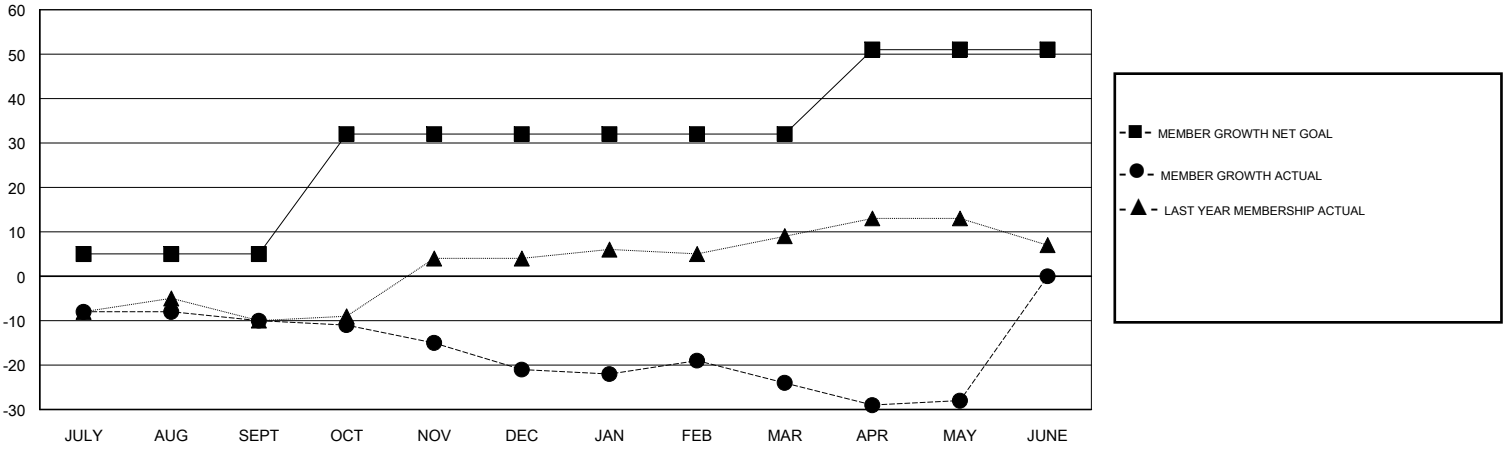
Clubs			
RESULTS FOR 2017-2018			
QUARTER	NEW CLUB GOAL	NEW CLUBS	DROPPED CLUBS
JULY/AUG/SEPT	0	0	0
OCT/NOV/DEC	1	0	0
JAN/FEB/MAR	0	0	0
APR/MAY/JUNE	1	0	0

Members			
RESULTS FOR 2017-2018			
QUARTER	MEMBER GROWTH NET GOAL	MEMBER GROWTH ACTUAL	DROPPED MEMBERS ACTUAL (including transfers)
JULY/AUG/SEPT	5	6	16
OCT/NOV/DEC	27	6	16
JAN/FEB/MAR	0	9	10
APR/MAY/JUNE	19	9	10

GOALS AND ACTUAL NEW CLUBS CUMULATIVE



GOALS AND ACTUAL MEMBERS CUMULATIVE



DROPPED CLUBS: 0

10 CLUBS OF 26 ADDED 1 OR MORE NEW MEMBERS

GENDER DISTRIBUTION	
MALE	383 (61.97%)
FEMALE	235 (38.03%)
Women Percentage Fiscal Year Goal: 40%	

DROPPED MEMBERS	
DECEASED	9
CLUB CANCELLED	0
OTHER	43
TOTAL	52

[CLICK HERE FOR CUMULATIVE MEMBERSHIP DATA](#)

TOTAL FAMILY UNIT MEMBERS	177
FAMILY MEMBERS PAYING HALF DUES	93